

Capatect Setzdübel 068

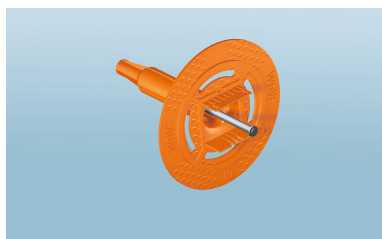
Approved plastic plate anchor for fixing insulation boards



Product Description

Field of Application	Capatect anchors consist of an anchor sleeve and an integrated setting bolt, which is driven into the anchoring substrate by means of a propellant charge and an related bolt setting tool. Approved plate anchor for fixing insulation boards in surface-flush installation in concrete substrates. The plate anchor may additionally be combined with the clip-on Capatect anchor disc 153/HDT 90 or 153/Easy 140.
Colours	Orange
Storage	Cool, dry and protected from frost.
Technical Data	<ul style="list-style-type: none"> ■ Point thermal transmittance X <ul style="list-style-type: none"> a) for insulation thicknesses < 140 mm, Chi value 0.002 W/K b) for insulation thicknesses < 200 mm, Chi value 0.001 W/K ■ Dowel: High density polyethylene (PE-HD) ■ Steel nail: Tempered steel with zinc flake coating ■ Cross section dimension of disc: 60 mm
Supplementary Product	<ul style="list-style-type: none"> ■ "Capatect Dübelscheibe 153/HDT 90" ■ "Capatect Dübelscheibe 153/Easy 140" ■ Fastening tool: Hilti DX 460, Hilti DX 5, Hilti DX 6 ■ Cartridges

Product No.	Prod.-Nr.	Insulation thickness (mm)	Package (St./Cardboard)
	068/06	60	300
	068/08	80	200
	068/10	100	200
	068/12	120	150
	068/14	140	100
	068/16	160	100
	068/18	180	100
	068/20	200	100



Note	The suitability of the "Capatect Setzdübel 068" must be checked by a competent person (e.g. structural engineer) for the respective building situation. The respective design values can be found in ETA-17/0304.
------	---

Application

Substrates	<p>Anchoring substrate:</p> <ul style="list-style-type: none">■ Reinforced or unreinforced normal concrete C12/15 - C35/45 according to EN 2006-1:2000.■ The concrete is either uncoated or coated.■ On uncoated concrete, the levelling layer or bonding may be max. 20 mm.■ On rendered concrete, the render thickness (e.g. existing render ≤ 15 mm) and the thickness of the levelling layer / bonding may be max. 25 mm in total.■ On concrete with bonded tiles, the tile incl. cladding adhesive (≤ 10 mm) and the thickness of the levelling layer / adhesive may be max. 20 mm in total.
Substrate Preparation	The substrate must be solid, dry, free of grease and dust and have sufficient load-bearing capacity for the use of dowels. Impurities and substances with a separating effect (e.g. formwork oil) must be removed. Damaged, peeling paint and textured plaster must be removed as far as possible. Hollow areas of plaster must be knocked off and cleaned. Highly absorbent, sanding or chalking surfaces must be thoroughly cleaned down to the solid substance and primed.
Consumption	In accordance with the static calculation or "allgemeine bauaufsichtliche Zulassung" (general building authority approval) / "allgemeine Bauartgenehmigung" (general type approval) of the ETIC systems.
Installation	<p>The installation of the setting anchors is to be carried out only after sufficient hardening of the adhesive bed.</p> <p>When installing "Capatect MW-Fassadendämmplatten" (MW-panels) the use of the "Capatect Dübelscheibe 153/HDT 90" is optional and when installing "Capatect-Lamellendämmplatten" (MW-lamellas) the "Dübelscheibe 153/Easy 140" is to be used.</p> <p>The anchor length must be selected according to the thickness of the insulation material. Using the "Hilti DX 460", "DX 5" or "DX 6" anchoring tools and the corresponding cartridges, the anchors are to be inserted perpendicular to the wall into the load-bearing substrate. The selection of the anchoring tool as well as the corresponding drive cartridges and bolt design depends on the strength of the substrate and the anchor length.</p> <p>To set the anchor evenly in the substrate, it is possible to regulate the driving energy by means of an adjusting wheel on the anchoring tool. (For cartridge recommendation, bolt design, see ETA-17/0304).</p> <p>In order to determine the suitability of the substrate and the strength of the necessary cartridges, the driving-in energy to fulfil the required anchorage depth must be determined by means of test settlements.</p> <p>The driving energy is to be adjusted in such a way that the average anchorage depth of the setting bolt is at least 30 mm for uncoated concrete and at least 20 mm for coated concrete. Check the anchorage depth according to ETA-17/0304.</p> <p>The firm fit of the anchors in the substrate is checked each time the anchoring tool is withdrawn; if an anchor is not properly fixed due to the substrate condition, it must be removed and a new anchor set next to it.</p>

Advice

Special Risks (Hazard Note) / Safety Advice (Status as at Date of Publication)	Only for professional users as a driving set in the dowel bar inserter.
Approval	ETA-17/0304
Customer Service Centre	Tel.: +49 6154 71-71710 Fax: +49 6154 71-71711 e-mail: kundenservicecenter@caparol.de
	International Distribution: Please see www.caparol.com

Technical Information No. 068 · Issue: March 2023

All suggestions and application instructions herein are based on our latest technical experience. Due to the wide variety of individual project conditions, we cannot be held responsible for their content. These instructions do not release the purchaser/ applicator from his responsibility to determine the suitability of the product in consideration of the project characteristics. These instructions are to be considered void when a new edition is released. Our general conditions of sale and delivery in their latest edition apply. This document is a translation of our German Technical Information No.068 · Capatect Setzdübel 068 · Issued: January 2023