

Capatect - Sockelschutzplatte 060/00

Mineral plaster base protection board for the plinth area.

Product Description

Field of Application	Base protection board for use within the Capatect ETICS to enhance mechanical strength on EPS or mineral wool insulation boards.
Material Properties	<ul style="list-style-type: none"> ■ high mechanical stability ■ dimensionally stable and non-aging ■ easy to cut, drill and handle ■ frost resistant ■ edges: blunt
Packaging/Package Size	120 pieces per pallet
Colours	antique white
Storage	<ul style="list-style-type: none"> ■ Base protection board: dry and cool; protect from solar radiation and moisture ■ Joint tape (self-adhesive fabric): dry; not above 50 °C
Technical Data	<ul style="list-style-type: none"> ■ Joint tape: Highly tear-resistant fabric Self-adhesive polyester fabric free of plasticizers UV and rotting resistant alkali-resistant
Product No.	<ul style="list-style-type: none"> ■ Base protection board: 060/00 ■ Joint tape: 060/10 ■ Base protection board: 800 mm x 620 mm x 10 mm ■ Joint tape: 50 m roll, width 120 mm

Application

General Info/ Preparation:

The Capatect-Sockelschutzplatte (base protection board) must be fully embedded into adhesive mortar onto the insulation boards. Only apply on offset-free substrates.

Install insulation boards with correspondingly reduced thickness in the plinth area. Place the base protection boards butt-joined - labelling face outwards.

If necessary cut the boards using a circular saw, a jigsaw or a hand-held circular saw. Install the base protection board max. 10 cm below ground level (ground contact area).

The area below ground level must be provided with additional moisture protection of the board and the plaster up to at least 5 cm above ground level.

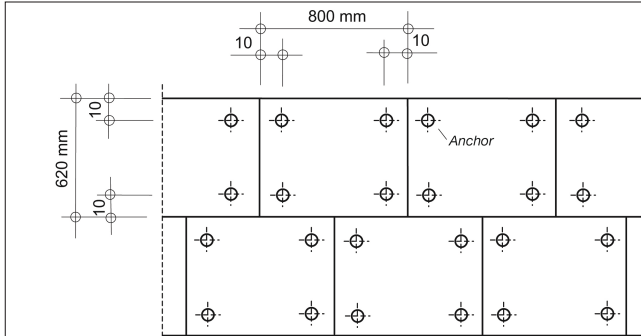


2. Drilling of anchor holes with the Capatect Fräsaufsatz 607/50 (milling adapter) for a flush installation of the anchor plate. Fix anchors "Capatect Universaldübel 053" before drying and curing of the adhesive mortar.

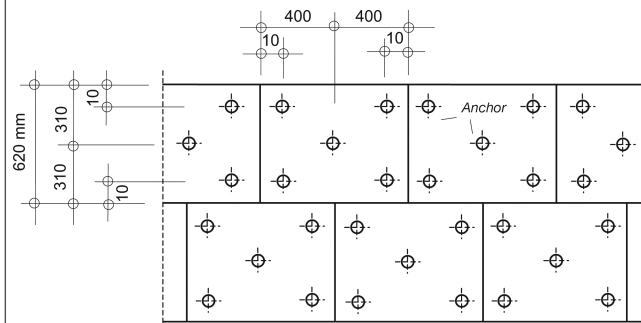
Number of anchors:

EPS: 4 per board = 8 per m²

Mineral wool: 5 per board = 10 per m²

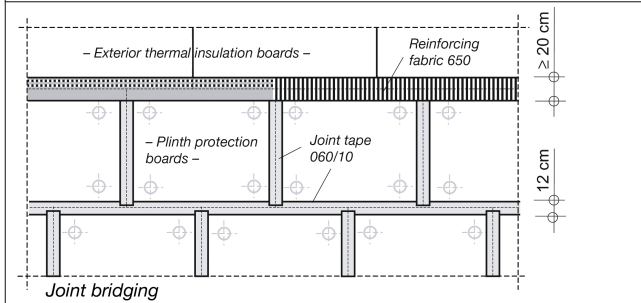


Anchor positions on EPS boards: 8 Anchors/m²



Anchor positions on mineral wool boards: 10 Anchors/m²

3. Bridging the joints centered prior to reinforcing with self-adhesive joint tape Capatect-Gewebeband 060/10. Double reinforcement with Capatect Gewebe 650 (width ≥ 20 cm) for transition from base protection boards to the upgoing insulation boards.



Joint bridging

Please Note (Status as at Date of Publication)

Disposal

Customer Service Centre

Cover the scaffoldings with tarpaulins to protect the surface from rain during application and curing.

Dispose remaining offcuts as construction waste.

Tel.: +49 6154 71-71710

Fax: +49 6154 71-71711

e-mail: kundenservicecenter@caparol.de

International Distribution: Please see www.caparol.com